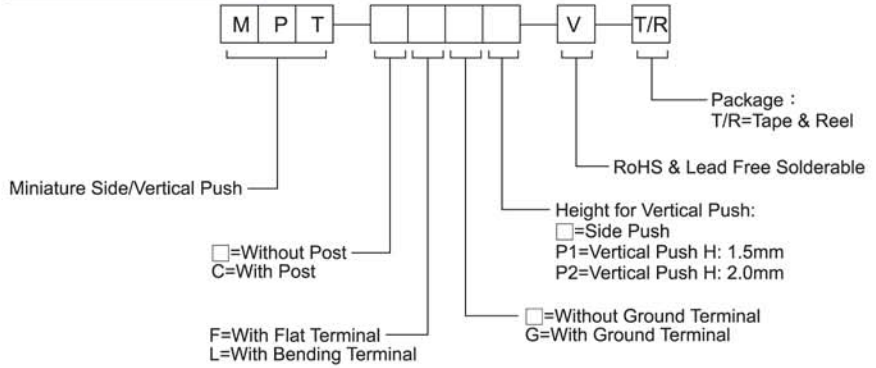


### HOW TO ORDER



### SPECIFICATION

#### MECHANICAL

Operation Force: 220±65gf Side push  
160±50gf Vertical push  
Stroke: 0.2±0.1mm/ - 0.05mm Side push  
0.13±0.1mm/ - 0.05mm Vertical push

#### ENVIRONMENTAL

Operation Temperature Range : -25°C to +70°C  
Storage Temperature Range : -30°C to +80°C

#### ELECTRICAL

Electrical Life: 100,000 cycles.  
Rating : 50mA, 12VDC

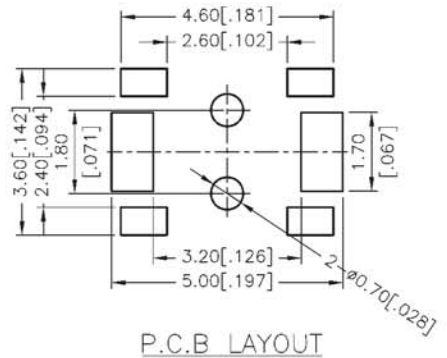
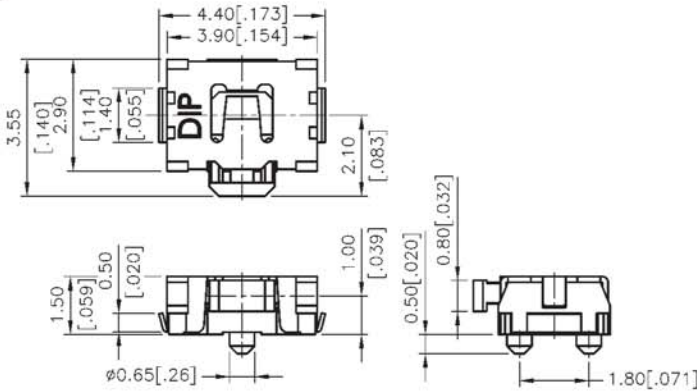
#### PACKAGE

Side push type: 3500 pcs/reel  
Vertical push type: 2000 pcs/reel

### CIRCUIT



### MPTCLG



### MPTCFP

