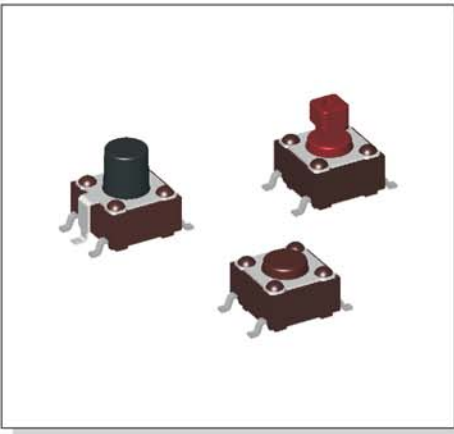
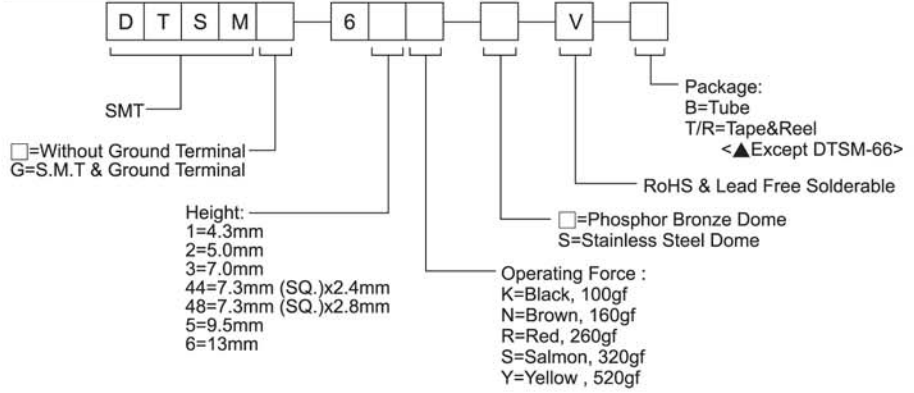


# DTSM(G)-6 SERIES

## 6x6 Surface Mounting (Ground Terminal Optional)



### HOW TO ORDER



### SPECIFICATION

#### MECHANICAL

Operation Force: 520 ± 130gf Yellow (Y)  
 320 ± 80gf Salmon (S)  
 260 ± 50gf Red (R)  
 160 ± 50gf Brown (N)  
 100 ± 50gf Black (K)

Stroke: 0.25 +0.2mm / -0.1mm

#### ENVIRONMENTAL

Operation Temperature: -25°C to +70°C  
 Storage Temperature: -30°C to +80°C

#### ELECTRICAL

Electrical Life: \*Phosphor Bronze Dome  
 50,000 cycles for 320gf, 520gf  
 100,000 cycles for 260gf  
 200,000 cycles for 100gf, 160gf  
 \*Stainless Steel Dome  
 300,000 cycles for 320gf, 520gf  
 500,000 cycles for 260gf  
 1,000,000 cycles for 100gf, 160gf

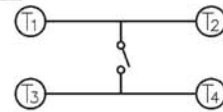
Rating: 50mA, 12VDC

#### PACKAGE

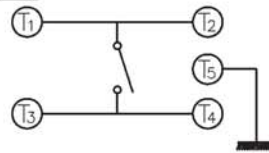
DTSM(G)-61:1000 pcs/reel  
 DTSM-62:900 pcs/reel  
 DTSMG-62:1000 pcs/reel  
 DTSM(G)-63:700 pcs/reel  
 DTSM-64:500 pcs/reel(To be changed to 700 pcs/reel for Jan 2008)  
 DTSMG-64:700 pcs/reel  
 DTSM(G)-65:380 pcs/reel

### CIRCUIT

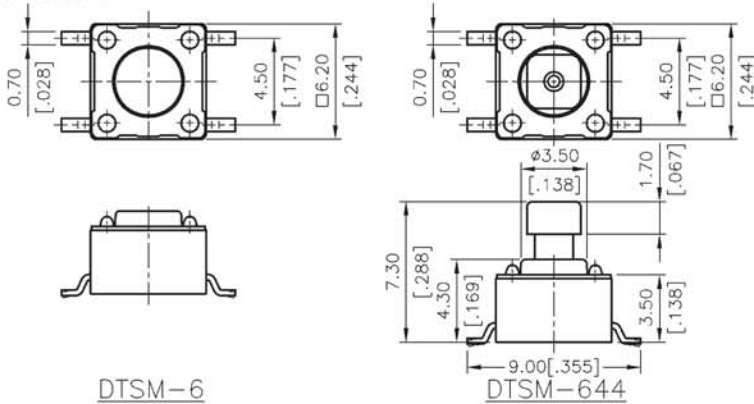
#### DTSM-6



#### DTSMG-6

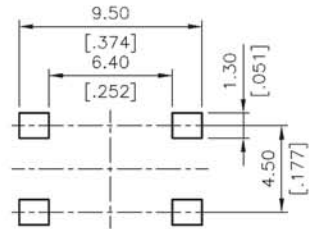


### DTSM-6



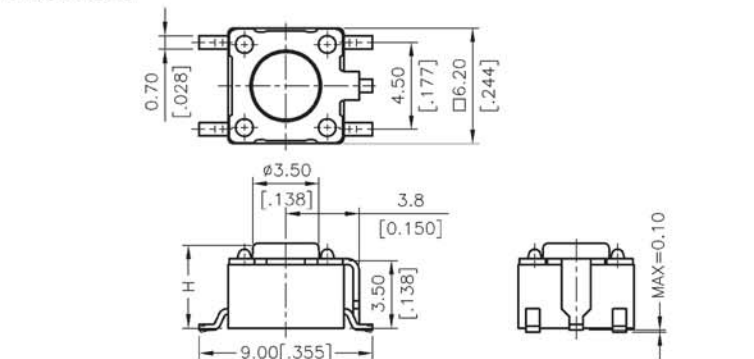
DTSM-644□-V	□A	2.40	0.095
	□B	1.60	0.063
DTSM-648□-V	□A	2.80	0.110
	□B	2.00	0.079
PROD. NO.	LOC.	MM	INCH.

DTSM-66□-V	13.00	[.512]
DTSM-65□-V	9.50	[.374]
DTSM-63□-V	7.00	[.275]
DTSM-62□-V	5.00	[.197]
DTSM-61□-V	4.30	[.169]
PROD. NO.	H	

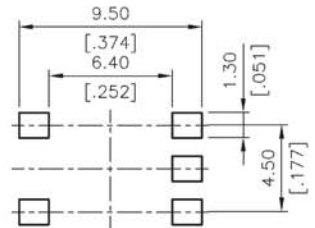


P.C.B LAYOUT

### DTSMG-6



DTSMG-66□-V	13.00	[.512]
DTSMG-65□-V	9.50	[.374]
DTSMG-63□-V	7.00	[.275]
DTSMG-62□-V	5.00	[.197]
DTSMG-61□-V	4.30	[.169]
PROD. NO.	H	



P.C.B LAYOUT

General Tolerance: ±0.2mm(±0.008")