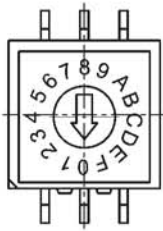


RH, RV, RM & RS SERIES

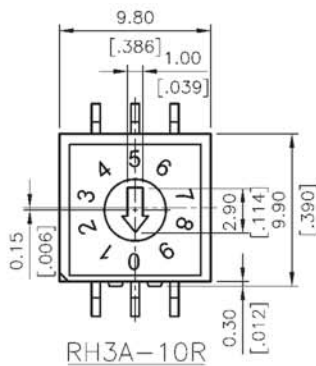
10x10mm Rotary Type



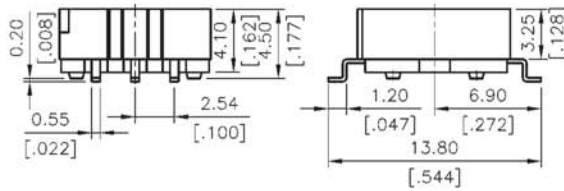
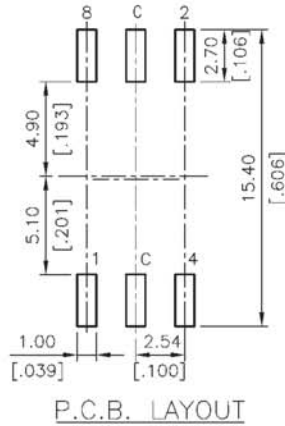
RM3



RH3A-16R

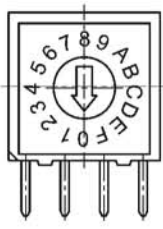


RH3A-10R

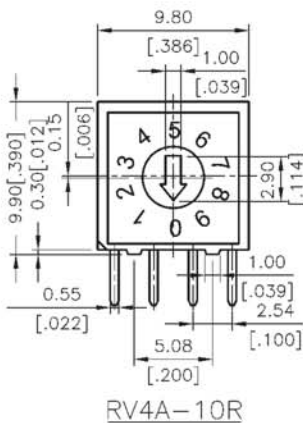
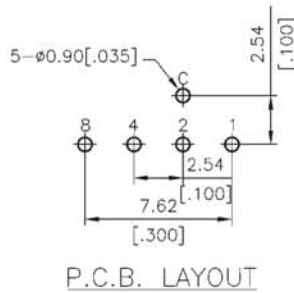
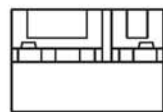


OON		CODE			
● OFF		1	2	4	8
TYPE	POSITION				
O10R	0	●	●	●	●
	1	○	●	●	●
	2	●	○	●	●
	3	○	○	●	●
	4	●	●	○	●
	5	○	●	○	●
	6	●	○	○	●
	7	○	○	○	●
	8	●	●	●	○
	9	○	●	●	○
O16R	A	●	○	●	○
	B	○	○	●	○
	C	●	●	○	○
	D	○	●	○	○
	E	●	○	○	○
	F	○	○	○	○

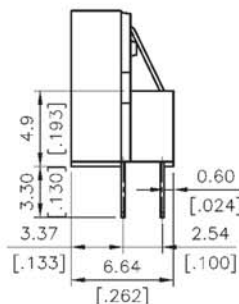
RV4



RV4A-16R



RV4A-10R



OON		CODE			
● OFF		1	2	4	8
TYPE	POSITION				
O10R	0	●	●	●	●
	1	○	●	●	●
	2	●	○	●	●
	3	○	○	●	●
	4	●	●	○	●
	5	○	●	○	●
	6	●	○	○	●
	7	○	○	○	●
	8	●	●	●	○
	9	○	●	●	○
O16R	A	●	○	●	○
	B	○	○	●	○
	C	●	●	○	○
	D	○	○	○	○
	E	●	○	○	○
	F	○	○	○	○

General Tolerance: ±0.2mm (±0.008")

www.diptronics.nl